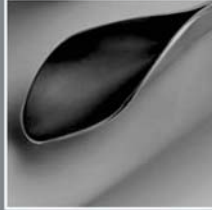


Hot&cold

Opera



OPERA: THE BEST OF NECTA'S PERFORMANCES FOR YOUR BUSINESS

L410U1

Opera is the H&C model that completes the Necta range dedicated to medium and large locations.

Opera offers enhanced performances to ensure top quality drinks with every cup and an elegant design that complements each environment it is in. With its innovative Z4000 espresso and double espresso technology,

Opera is bound to become the point of reference on its market segment for the years to come.

DESIGN

- Refined and high tech design
- Double backlit front panel with an elegant balck and white aesthetics
- Chromium plated frame around selection area

USER INTERFACE

- 20 direct selections
- Touch sensitive keypad with LED backlit buttons and labels
- Graphic display 128 x 64 pixel
- Metallic payment interface
- Optional delivery area lighting
- Vandal proof coin introduction available as option

TECHNICAL INNOVATION

- Z4000 available in small and large version
- Double espresso version available
- New grinder with self setting regulation of blades as option
- New 0.5 L insulated stainless steel boiler

ELECTRONICS

- Advanced 16 bit electronics with flash memory
- Master/slave connection with other Necta's S&F models
- Possibility to create or modify set-up through GIGA

CAPACITY

CUPS	620
STIRRERS	550
COFFEE BEANS CANISTER CAPACITY	3.2 KG
SOLUBLE CANISTER CAPACITY	2.5 L - 4.5 L - 6 L
STAINLESS STEEL ESPRESSO BOILER	0.5 L

FEATURES

HEIGHT	1830 MM
WIDTH	600 MM
DEPTH	740 MM
DEPTH WITH OPEN DOOR	1250 MM
WEIGHT	125 KG APPROX.
POWER SUPPLY	230 V
FREQUENCY	50 Hz
INSTALLED POWER	1850 W

ENERGY CONSUMPTION

TO REACH OPERATING TEMPERATURE	36,87 WH
FOR EACH HOUR OF STAND-BY	1320 WH

CONFIGURATIONS

	ESPRESSO	DOUBLE ESPRESSO
SUGAR +	☒	☒
SUGAR -	☒	☒
NO CUP	•	•
ESPRESSO	☒	☒☒
BLACK COFFEE	☒	☒☒
MACCHIATO	☒	☒☒
CAPPUCCINO	☒	☒☒
CAPPUCCINO WITH CHOCOLATE	☒	☒
DECAFFEINATED COFFEE	☒	☒
DECAFFEINATED MACCHIATO	☒	☒
DECAFFEINATED CAPPUCCINO	☒	☒
DECAF. CAPP. WITH CHOCOLATE	☒	•
BARLEY COFFEE	☒	☒
BARLEY CAPPUCCINO	•	•
MACCHIATO BARLEY COFFEE	☒	☒
GINSENG COFFEE	☒	•
MACCHIATO WITH GINSENG COFFEE	☒	•
CHOCOLATE	☒	☒
MILK CHOCOLATE	☒	•
LEMON TEA	☒	☒
MILK	☒	•
MILK AND COFFEE	☒	•
GINSENG CAPPUCCINO	•	•
TEA	•	•
TEA WITH MILK	•	•
STRONG CHOCOLATE	•	•
HOT WATER	•	•
CUP ONLY	•	•

• available as alternative to standard preselections/selections.

☒ second type of coffee in beans available.

N&W Global Vending reserves the right to alter specifications without notice.



ISO 14001 : 2004



ISO 9001:2008



Contact:
Vendpro
 Unit 3, 23 Geddes Street, Balcatta, Perth, WA 6021
 P: 08 9240 1333 | E: info@vendpro.com.au
 W: www.vendpro.com.au



www.nwglobalvending.it